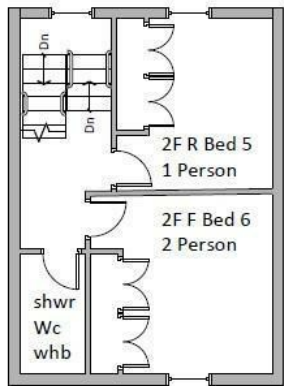
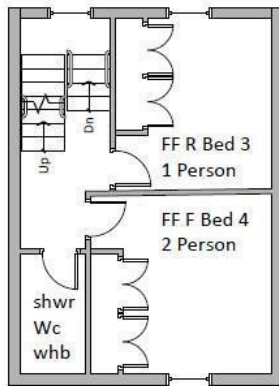


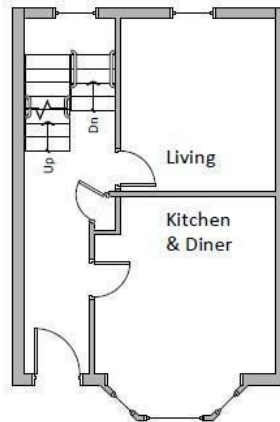
**ROOM 1, 23 GLOUCESTER PLACE
CHELTENHAM
GL52 2RN**



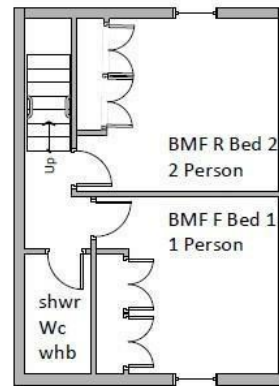
SECOND FLOOR



FIRST FLOOR

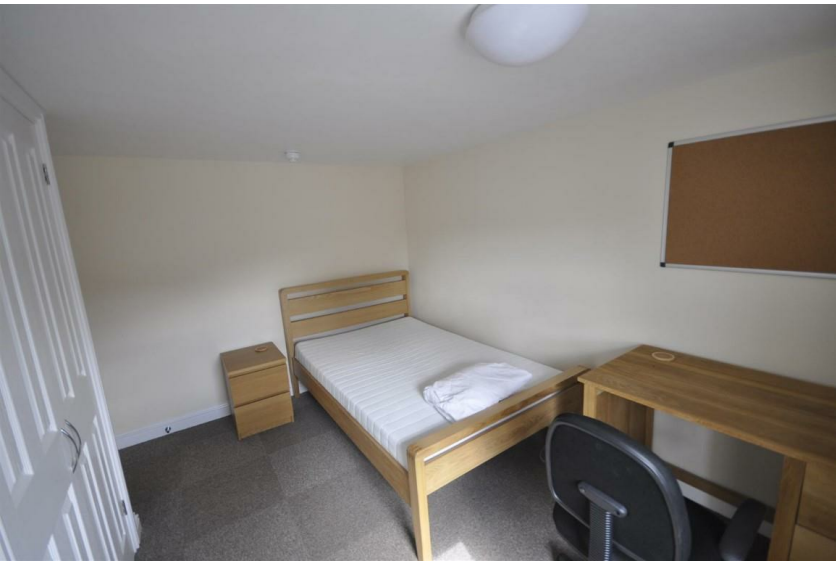


GROUND FLOOR



BASEMENT FLOOR






PCM £570 PCM

IN THE FIRST INSTANCE PLEASE EMAIL YOUR ENQUIRY - custom designed Six Bedroom Student/professional property situated in the very centre of Cheltenham. The property benefits from Under-Floor Heating, every room has its own thermostatic control. Room 1 is on the lower ground floor and offers a Fitted Double Wardrobe, Three Quarter width Bed, Desk and Chair . The house offers Three Spacious DOUBLE SHOWER ROOMS (one on each floor), so every student is only ever sharing with one other person. The Fully Fitted Kitchen includes good quality White Goods and there is a Dining Area with Table and Chairs, plus a separate Lounge with Smart TV and an outside Courtyard area, ideal for socialising. THE PROPERTY IS OFFERED ON A FURNISHED BASIS at £570.00 Per Room per Month and includes all bills, plus high speed broadband.

Score	Energy rating	Current	Potential
92+	A		
81-91	B		90 B
69-80	C		
55-68	D	58 D	
39-54	E		
21-38	F		
1-20	G		



Energy Efficiency Rating		
	Current	Potential
Very energy efficient - lower running costs		
(92 plus) A		90
(81-91) B		
(69-80) C		
(55-68) D	58	
(39-54) E		
(21-38) F		
(1-20) G		
Not energy efficient - higher running costs		
England & Wales EU Directive 2002/91/EC 		

Sure Property Group
 23 Bath Street
 Cheltenham
 Gloucestershire
 GL50 1YA
 01242 261222/ 241200
info@surecheltenham.co.uk

Included COUNCIL TAX BAND
 Exempt